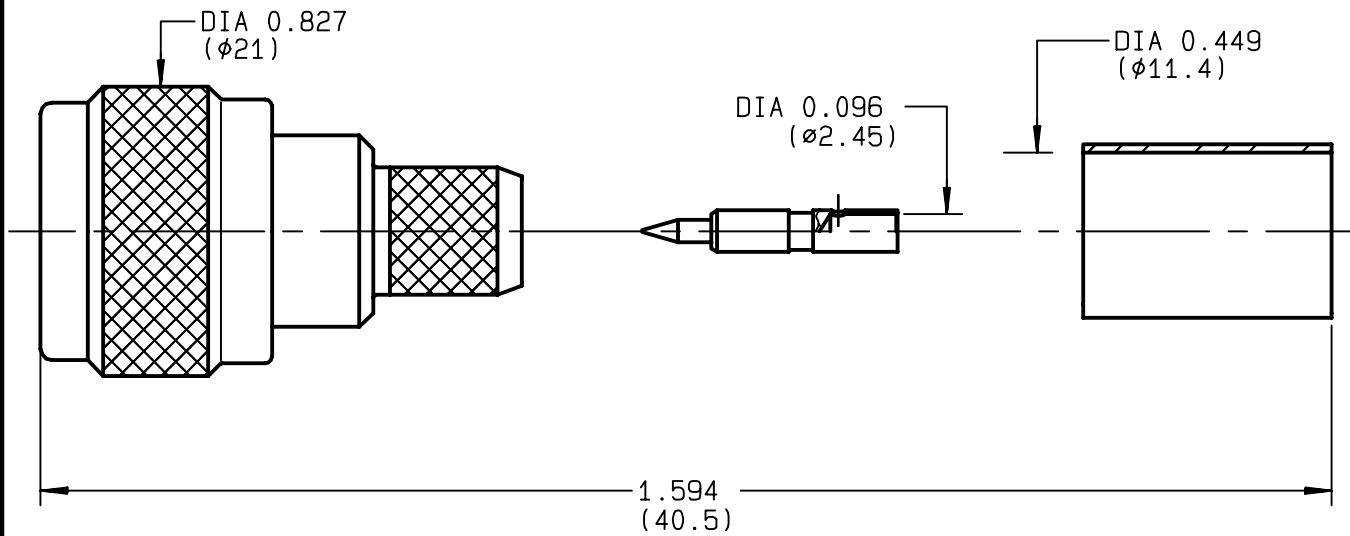


**STRAIGHT PLUG CRIMP TYPE
CABLE 11/50 D**

R161.088.030
SERIES N



NOMINAL IMPEDANCE	50 Ω	CABLES : KX 13 RG 214 RG 225
FREQUENCY RANGE	0-11 GHz	
TEMPERATURE RATING	-55/+155 °C	
V.S.W.R	1.30 + x F(GHz)Maxi	
RF INSERTION LOSS	0.048 √F(GHz) dB Maxi	
VOLTAGE RATING	1400 Veff Maxi	
DIELECTRIC WITHSTANDING VOLTAGE	2500 Veff Mini	
INSULATION RESISTANCE	5000 MΩMini	
HERMETIC SEAL	NA Atm.cm ³ /s	
LEAKAGE (pressurized only)	NA	
MECHANICAL DURABILITY	500 Cycles	OTHERS CHARACTERISTICS
WEIGHT	gr	CABLE RETENTION 400 N Mini
SPECIFICATION		CENTER CONTACT RETENTION
		Axial force - mating end 27 N Mini
		Axial force - opposite end 27 N Mini
		Torque NA cm.N Mini
		RECOMMENDED TORQUES
		Mating 130 cm.N
		Panel nut NA cm.N
		Clamp nut NA cm.N

CONNECTOR PARTS	MATERIALS	FINISH	(all values are given in micrometers)
BODY	BRASS	BBR 2	
OUTER CONTACT	BRASS	BBR 2	
CENTER CONTACT	BRASS	GOLD 0.8 OVER NICKEL 2	
INSULATOR	PTFE	-	
GASKET	SILICONE RUBBER	-	
OTHERS PIECES	BRASS	BBR 2	

ISSUE	CREATION DATE	FILE PART-NUMBER
9835D00	19/04/1996	96-0400-258



MASTRIANO

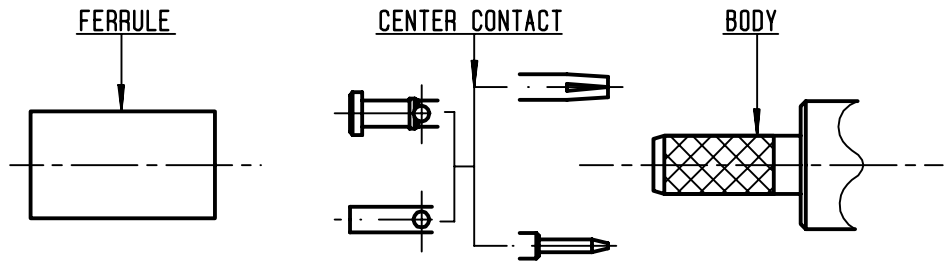
The information given here is subject to change without notice.
Design changes may be in order to improve the product .

Connect to the future



R161.088.030

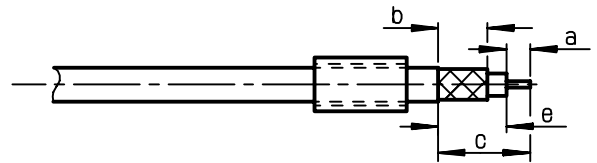
ISSUE 9835D00 SERIES N



①

Slide ferrule onto cable
Strip the cable .

-
-



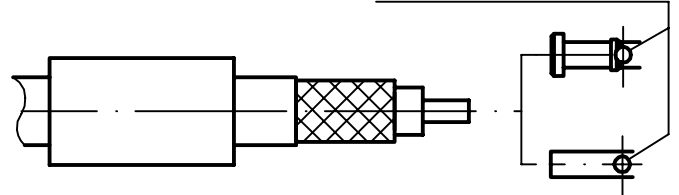
Stripping	a	b	c	d	e
inch	0.189	0.406	0.689	0	0.5
mm	4.8	10.3	17.5		12.7

②

Slide center contact on until it bottoms against cable dielectric .
Solder or crimp center contact .
Crimping tool : R282 231 000 (Hex. : 0.100)
or R282 293 000 (M22520/5-01)
+ dies R282 235 116 (Y116 DANIELS).

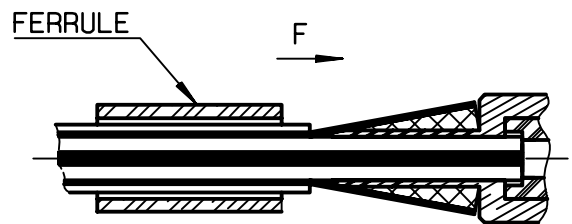
-

SOLDER / CRIMPING



③

Fan the braid .
Slide cable into the body until bottoms against insulator .
Slide ferrule over the braid .
(In direction F)



④

Crimp the ferrule with crimping tool R 282 231 000 (Hex. : 0.415) or crimping tool R282 293 000 (M22520/5-01) + dies R282 235 116 (Y116 DANIELS)
Cut excess of braid if necessary .

-
-
-
-

